

# Highdown EXPLORERS



## Wildlife

Highdown Gardens is an ideal habitat for wildlife; situated on the South Downs National Park, it supports a diverse range of species; birds, bats, small mammals, amphibians, reptiles, insects and important pollinators.



WORTHING BOROUGH  
COUNCIL

Highdown  
GARDENS

[www.highdowngardens.co.uk](http://www.highdowngardens.co.uk)



HERITAGE  
FUND



Birds play a vital role in the garden, they control pests, pollinate plants & spread seeds.



Look around, how many birds can you spot?  
Can you see nests in trees?



Close your eyes and listen.  
Can you hear different birds singing?

Discover the **Rock Garden** and ponds -



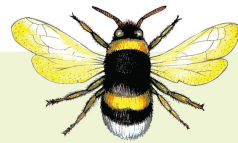
What wildlife can you see  
below and above the water?  
Is the water moving?  
Can you see insects, birds or fish?



Visit the **Sensory Garden** and discover bees and butterflies collecting pollen from flowers -



How many different types of  
butterflies can you spot?  
Are the bees all the same size and shape?  
Which flowers do the bees like the most?



Let's explore -



Can you find any other evidence to show  
that wildlife lives in the garden?  
Look for: animal tracks, poo, nests, spider webs.