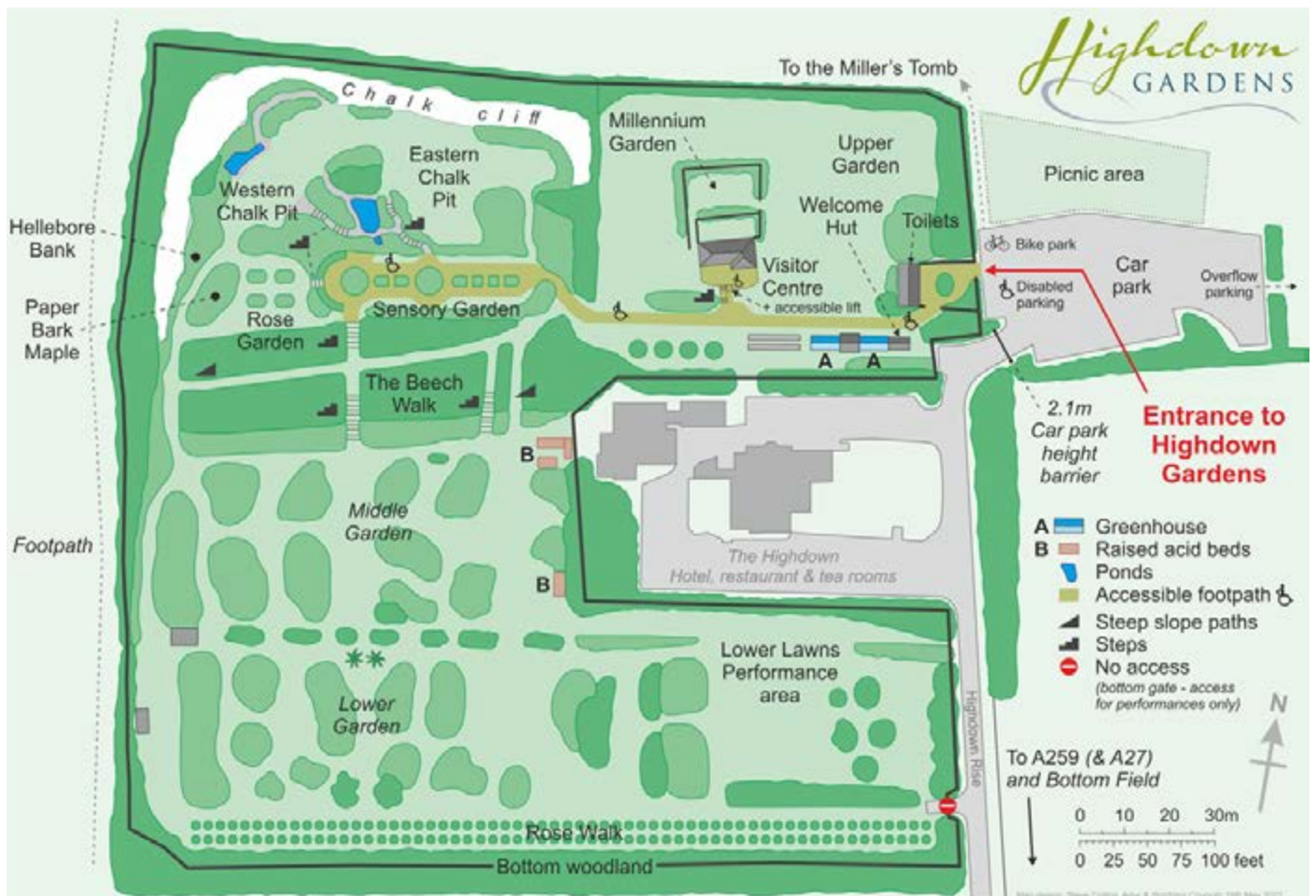


Highdown GARDENS



Visual Guide



This visual guide is for people coming to Highdown Gardens.

Welcome to the gardens. The Gardens and the Visitor Centre are free entry. Assistance dogs are welcome in the garden on a lead.

The gardens are open every day from 10am until dusk, which means they close at different times throughout the year. The times are on the website.

www.highdowngardens.co.uk



highdown.gardens@adur-worthing.gov.uk



01273 263060: Mon to Fri 9am to 4pm
(Emergency out of hours: 01243 558500)



Highdown Gardens, Highdown Rise,
Worthing, West Sussex, BN12 6FB



Via the A259: Access only from the West on
A259 Littlehampton Road. Turn left up Highdown Rise.





As you arrive at the car park there is a height barrier. If you are going to be arriving in a minibus or a coach, please contact the staff to arrange to have the barrier opened.



There are disabled parking bays available right next to the entrance to the gardens.



This is the gate where you will enter the gardens.



Just past the entrance gate is the building where the toilets are.



There is an accessible toilet. You can use it if you have a radar key.



This is what the accessible toilet looks like inside.



On the way in to the gardens there are signs with lots of information on them.



Some parts of the gardens are accessible to wheelchairs but some parts are not.



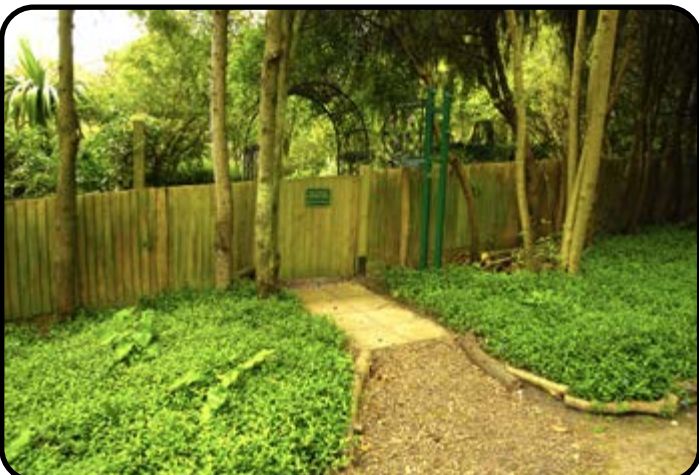
There is a map which shows you where the accessible path is.



After the signs this is the path into the gardens.



Along the path there is an old post box which is used for donations. This path goes to the Millennium Garden.



This is the gate to the
Millennium Garden



This is the Millennium Garden. It is a small and quiet space to enjoy.



Nearby is the visitor centre. You can go inside by going up the stairs or in the lift.



To use the lift, press the button and the door will unlock.



Inside the lift these are the controls. Press and hold the number 1 to go up.



Once you are on the same level as the visitor centre, you can enter through this door.



Inside there are lots of activities to do and things to see.



Continuing along the path there are signs to show you the way to different parts of the gardens.



This is the sensory garden. This is where the wheelchair access path ends.



From the sensory garden you can go to other parts of the garden. Some paths can be muddy and steep in places, so the rest of the gardens may not be suitable for wheelchair access.



This is the chalk pit.



Nearby the chalk pit is the pond.



There are many paths to take to explore the gardens.



This is the middle garden.



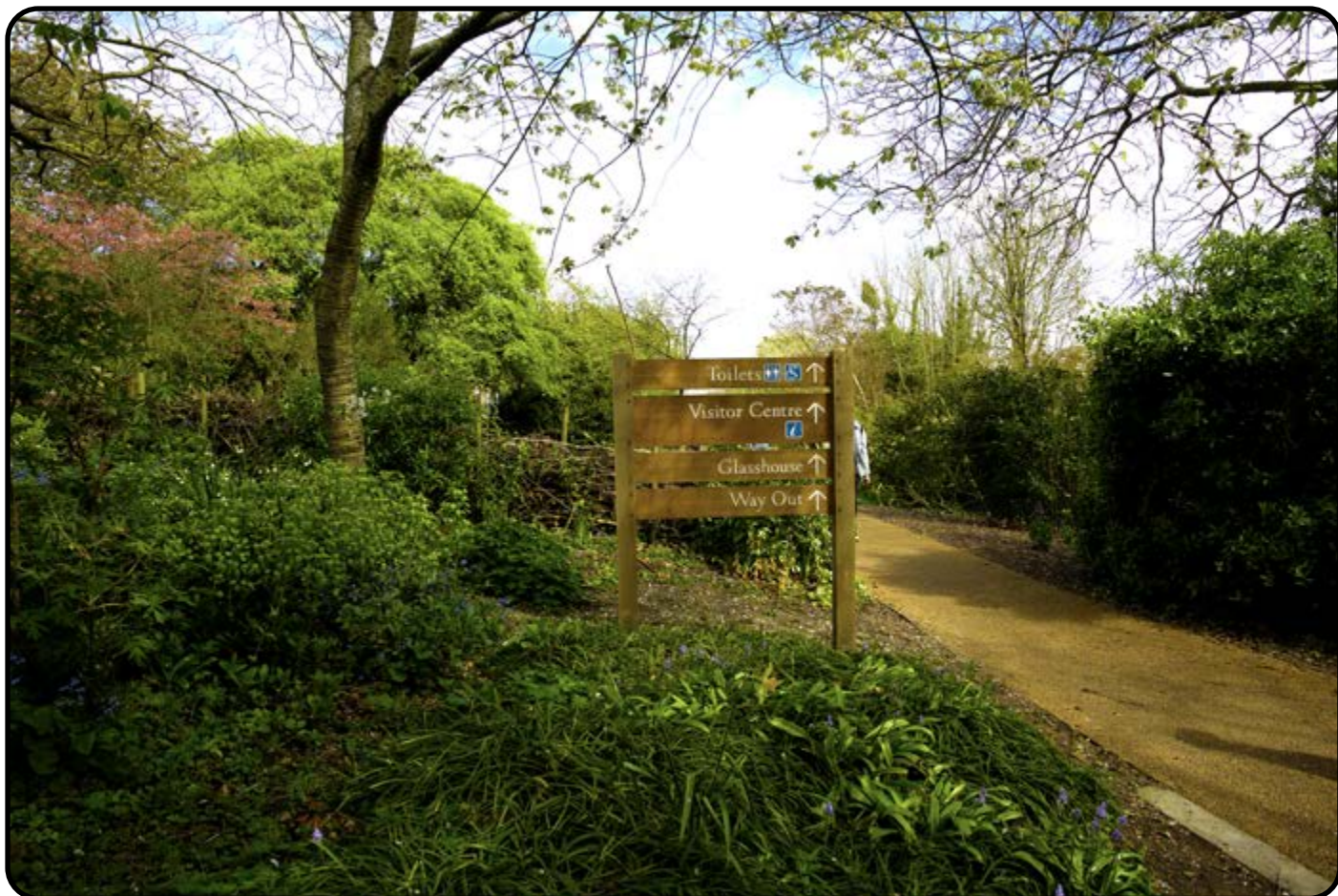
There are signs to help you find your way around.



This is the performance area, if you are coming to see a show it will probably be happening in this part of the gardens.



This is the lower garden walk way.



We hope you enjoy your visit to Highdown Gardens and come back again soon.



This visual guide was produced by Figment Arts, an arts organisation based in the South East. We work with people who face barriers to accessing the arts.

We value the arts and creativity as a vital part of what makes a healthy and strong society.

The photographs in this guide were taken by autistic photographer and blogger, John Wells.

www.figmentarts.co.uk

